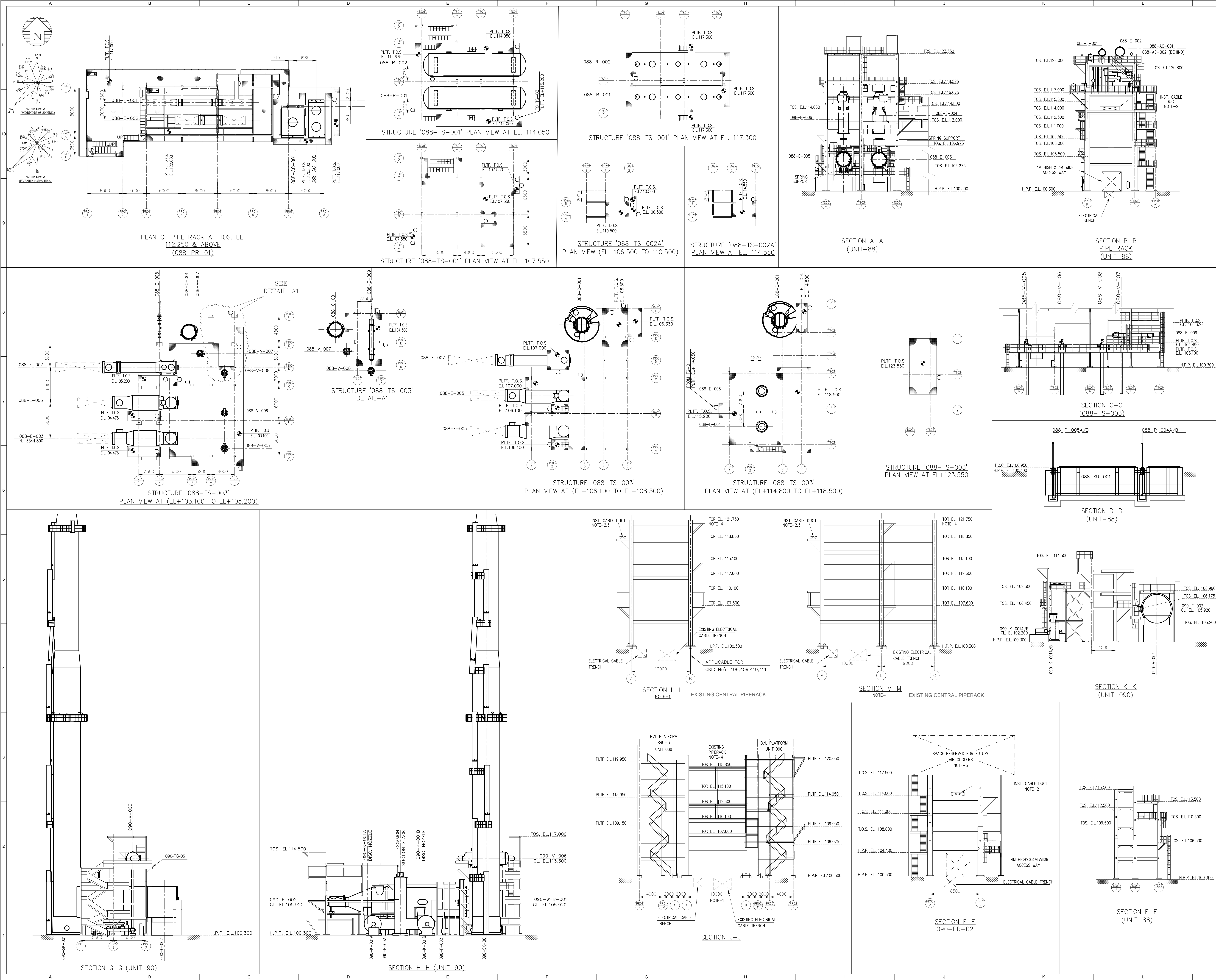


PACKAGES/EQUIPMENT LIST	
EQUIPMENT TAG	DESCRIPTION
08B-A-001*	REACTION FURNACE PACKAGE
	*CONSISTS OF FOLLOWING ITEMS
08B-WB-001	WASTE HEAT EXCHANGER 1st PASS
08B-WB-002	WASTE HEAT EXCHANGER 2nd PASS
08B-F-001	REACTION FURNACE BURNER
08B-F-002	REACTION FURNACE
08B-W-004	WASTE HEAT EXCHANGER STEAM DRUM
08A-A-002	TOP DOSING PACKAGE
EQUIPMENT TAG	DESCRIPTION
09D-A-001*	INCINERATOR PACKAGE
	*CONSISTS OF FOLLOWING ITEMS
09D-WB-001A/B	INCINERATOR WASTE HEAT EXCHANGER
09D-F-001	INCINERATOR BURNER
09D-F-002	INCINERATOR
09D-Y-006	INCINERATOR WHE STEAM DRUM
09D-W-007	INCINERATOR WHE WUD DRUM
09D-DS-002	INCINERATOR HP STEAM DESUPERHEATER
09D-K-001 A/B	INCINERATOR FANS
09D-SK-001	INCINERATOR STACK
09D-A-002	TOP DOSING PACKAGE
09D-AH-001	ANALYZER SHELTER

PACKAGES EQUIPMENT LIST	
EQUIPMENT TAG	DESCRIPTION
08B-A-001*	REACTION FURNACE PACKAGE
	*CONSISTS OF FOLLOWING ITEMS
08B-WHB-001	WASTE HEAT EXCHANGER 1st PASS
08B-WHB-002	WASTE HEAT EXCHANGER 2nd PASS
08B-F-001	REACTION FURNACE BURNER
08B-F-002	REACTION FURNACE
08B-WHE-001	WASTE HEAT EXCHANGER STEAM DRUM
08B-A-002	TSP DOSING PACKAGE
	DESCRIPTION
090-A-001*	INCINERATOR PACKAGE
	*CONSISTS OF FOLLOWING ITEMS
090-WHB-001A/B	INCINERATOR WASTE HEAT EXCHANGER
090-F-001	INCINERATOR BURNER
090-F-002	INCINERATOR
090-V-006	INCINERATOR WHE STEAM DRUM
090-WHE-001	INCINERATOR WHE MID DRUM
090-DS-002	INCINERATOR HP STEAM DESUPERHEATER
090-K-001 A/B	INCINERATOR FANS
090-SK-001	INCINERATOR SHELTER
090-TSP-001	TSP DOSING PACKAGE
090-AH-001	ANALYZER STACK



NOTES:

1. LOCATION, ELEVATIONS AND DIMENSION OF EXISTING CENTRAL PIPE RACK AND CABLE TRENCHES ARE INDICATIVE. TO BE VALIDATED AND UPDATED BY LSTK CONTRACTOR DURING DETAIL ENGINEERING.
2. DIMENSION, LOCATION AND ELEVATION OF CABLE DUCT SHOWN IS PRELIMINARY. TO BE FURTHER DEVELOPED AND CONFIRMED BY LSTK CONTRACTOR DURING DETAIL ENGINEERING.
3. CANTILEVER ARRANGEMENT SHOWN IS INDICATIVE. LSTK CONTRACTOR TO DEVELOP FURTHER DURING DETAIL ENGINEERING. IF REQUIRED, LSTK CONTRACTOR SHALL DESIGN AND PROVIDE NEW CANTILEVER ARRANGEMENT FROM THE EXISTING PIPE RACKS, AFTER NECESSARY REINFORCEMENT.
4. IF ADDITIONAL LEVEL IS REQUIRED IN EXISTING PIPERACKS, SAME SHALL BE IN THE SCOPE OF LSTK CONTRACTOR AND SHALL BE PROVIDED AFTER PROPER REINFORCEMENT OF EXISTING PIPERACKS.
5. THIS PIPERACK SHALL BE DESIGNED TO ACCOMMODATE PIPING AND AIRCOOLERS OF FUTURE TGTU-2. CONTRACTOR SHALL SUITABLY INCLUDE LOADING/WEIGHT OF FUTURE AIRCOOLERS & PIPING FOR DESIGN PURPOSE.

GRAPHIC SCALE 1:200

0 1 2 5 7.5 10 15 20 25 30m

Rev	Date	Description of Issue	Written by	Checked by	Approved by	Authorized by
B	31/01/2020	ISSUED FOR DESIGN	SMAM	SL	TI / SL	JMC
A	15/11/2019	ISSUED FOR APPROVAL	SMAM	SL	TI / SL	JMC

DOCUMENT CATEGORY: PROJECT
DOCUMENT REVIEW STATUS (BY CLIENT):
☐ APPROVAL
☐ REVIEW
☐ INFORMATION

PROJECT: **STANDBY SRU & ADDITIONAL TANKS**
OCL PARADIP REFINERY, ODISHA, INDIA

OWNER: **INDIAN OIL CORPORATION LTD.**

PM: **TechnipFMC**
CONFIDENTIAL. NOT TO DISCLOSE WITHOUT AUTHORIZATION

TITLE: **UNIT PLOT PLAN**
SRU-3, WHB & INCINERATOR AREA
(UNIT -088 & 090) SOUTH OF CREEK

DRAWING NO.		PAGE		REV.	
SCALE	080557C	088	DW	0051	001
PROJECT	UNIT	DOC. TYPE	MAT. CODE	SER. NO.	
1:200				02	B

THIS DOCUMENT OR DRAWING IS THE PROPERTY OF INDIAN OIL CORPORATION LTD. AND SHALL NOT BE REPRODUCED OR COPIED IN ANY MANNER WITHOUT THE WRITTEN CONSENT OF INDIAN OIL CORPORATION LTD. ANY REPRODUCTION OR COPIING OF THIS DOCUMENT OR DRAWING WITHOUT THE WRITTEN CONSENT OF INDIAN OIL CORPORATION LTD. IS STRICTLY PROHIBITED.